

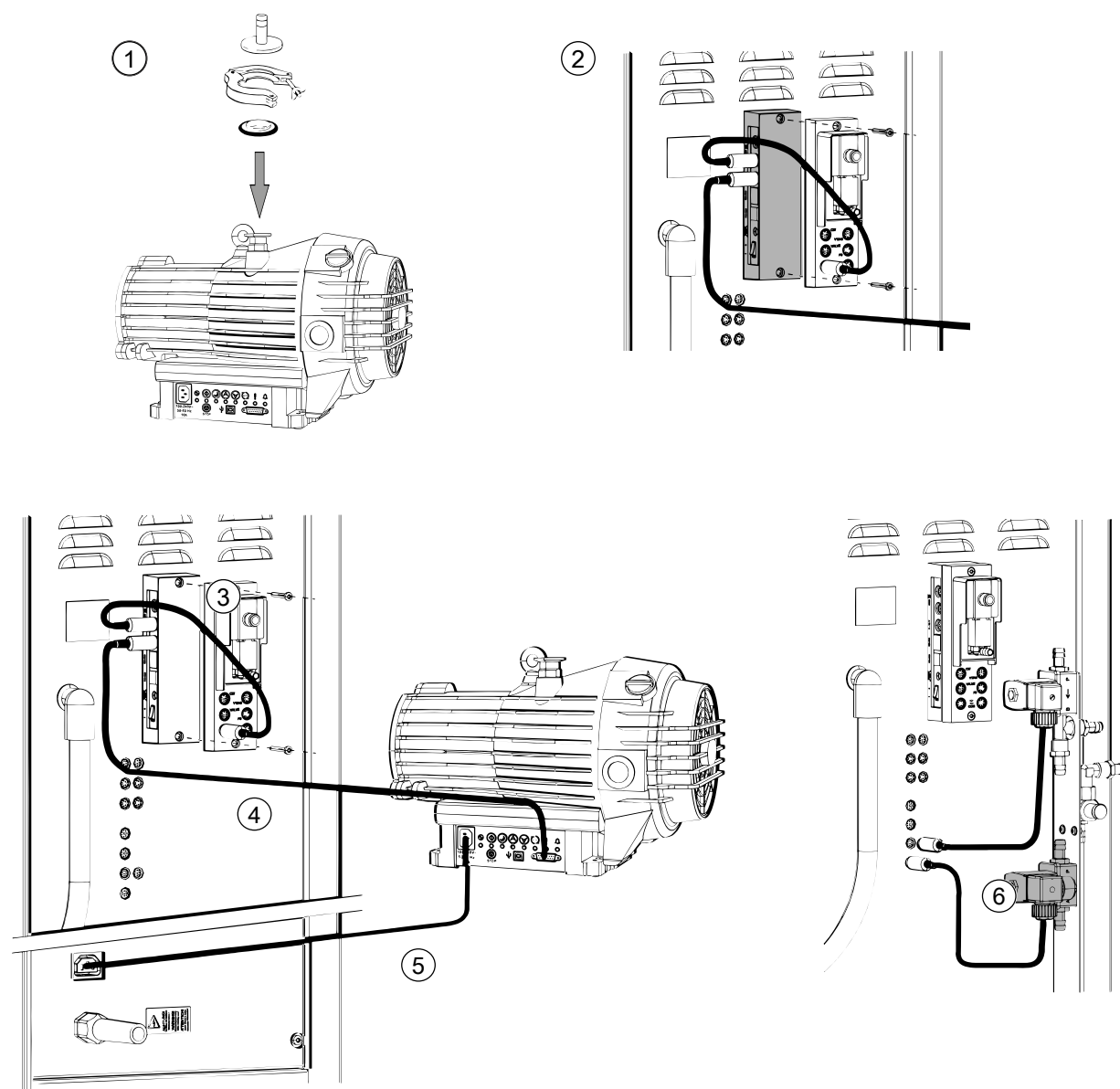
Rotavapor® R-250 Pro with Vacuum pump Edwards nXDS 10iC



NOTE

Reading and following the instructions in this document does not replace reading and following the instructions in the operation manual.

Installing the Vacuum pump Edwards nXDS 10iC

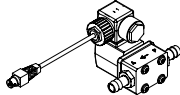
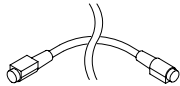
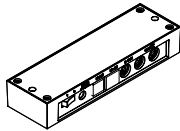
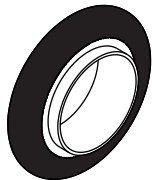
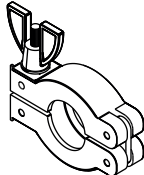
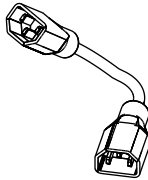


Installing a non BUCHI vacuum pump (option)

- Install a non BUCHI vacuum pump. See "*Operation Manual Rotavapor® R-250 Pro*", Installing a non BUCHI vacuum pump (option).



Spare parts

	Order no.	Image
Vacuum valve, 4 mm, 24 V, connection piece 12.5 mm Electrical valve for vacuum regulation when operated with a non-BUCHI vacuum pump.	11055928	
Communication cable. BUCHI COM, 0.3 m, 6p	11058705	
LegacyBox. Incl. accessory kit Interface between Interface I-300 / I-300 Pro (with VacuBox) to peripherals of older generations (Vacuum Pump V-7xx, Recirculating Chiller F-1xx).	11061166	
Vacuum seal KF 25	11063457	
Vacuum clamp KF 25	11063662	
Connection cable, for vacuum pump	11064934	
Vacuum pump control cable	11076089	
Hose adapter	11080655	