

ProxiMate™ Essential with IP54 option

Unlock more insights and guidance through our media resources:



www.buchi.com



NOTE

Reading and following the instructions in this document does not replace reading and following the instructions in the operation manual.

Use only genuine BUCHI consumables and spare parts in order to ensure correct, safe and reliable operation of the system.

IP54 Set

	Order no.	Image
IP54-set	11082507	

Installing the IP54 Set

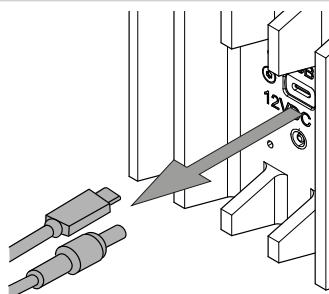


NOTE

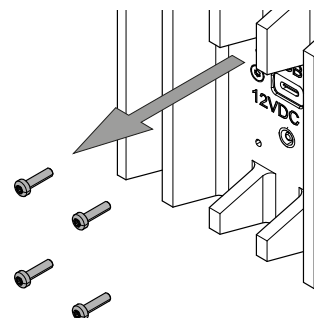
The external power supply is not IP54-rated and requires separate protection against water splashes.

The IP54 set is an optional accessory that enables IP54 protection for the ProxiMate™ Essential by covering the sockets at the back of the instrument.

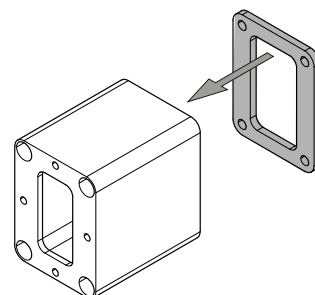
- ▶ Turn off the instrument.
- ▶ Unplug the power and the USB-C cable from the back.



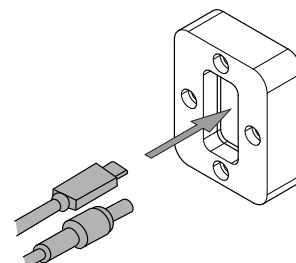
- ▶ Remove the four screws that are located around the USB-C and the power socket.
- ▶ Put the screws aside.



- ▶ Remove the liner from the seal.
- ▶ Stick the seal onto the bottom of the cable guide. Ensure the correct alignment of the holes.



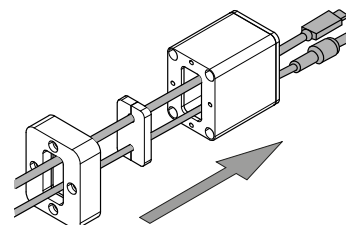
- ▶ Pass the USB-C cable and the power cable through the cable seal fixture.



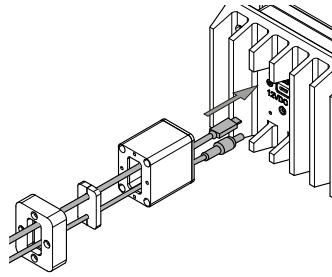
- ▶ Push the cables through the slits in the cable seal to position them in the holes.

⇒ The USB-C cable in the larger hole and the power cable in the smaller hole.

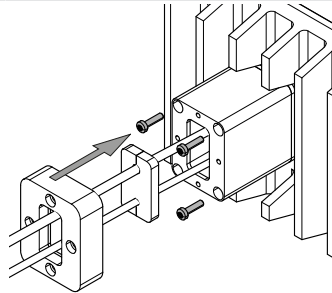
- ▶ Pass the cables through the cable guide with the attached seal.



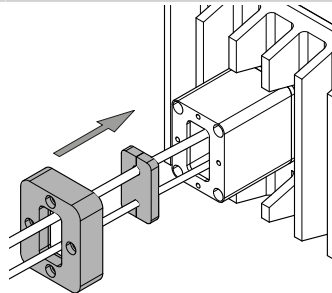
- Plug the cables back into the instrument.



- Mount the cable guide with the screws on the back of the instrument.



- Push the cable seal and the cable seal fixture on top of the cable guide.



- Attach them with the screws from the set.

